



MÜLLER MOTORCYCLE AG

quality parts

by müller motorcycle ag

Attachment 1 for parts certificate G-Zi.: 06-TAAS-0441/E2/SRA

TÜV AUSTRIA

Installation Manual

Müller Motorcycle Triple Tree Type 01

Notice: The installation of the triple tree kit may only be done by qualified personnel or authorized service centers to ensure the roadworthiness and safety of the vehicle. We do not explain procedures that should be familiar to qualified personnel. All screws have to be secured with medium strength lock washers. Nut and bolting torques are listed and have to be adhered to.

- Jack up the motorcycle, secure it and remove the front wheel. Dismount the brake system, electrical connections have to be pulled. Dismantle the original triple tree.
- Prepare the new lower Müller triple tree segment (nr 2). The roller bearing is pre-mounted on all triple trees, except, XLH -04' and up, FXD -06' and up, here you can pull off the orig. roller bearing by hand and slide it over the stem. **(make sure to grease up both roller bearings before installing).**
- Push up the lower bracket with the press fitted stem (nr 2+4) into the steering head. Use orig. bearing and cover and screw it in place with the bearing adjuster (nr 5). The lower cover tubes for New Style Triple Trees (nr 35,36,37,39) are pre-mounted.
- Fit the upper bracket (nr 1) onto the stem and insert disc (nr 24 only with classic) in the upper bracket and secure it with nut (nr 6, classic style) respectively steering head screw (nr 6, new style and bob style) onto the stem.

For New Style, insert the cover tubes and springs (nr 38, 40) between upper and lower bracket. Grease up the springs before inserting to make them stick into the upper bracket for easier mounting.

- Insert the fastening bolt and screw (nr 20,21) only with classic style, in the upper bracket and position it to ensure the notch for the fork slider is open so you can push in the fork slider.
- Mount the steering stop (nr 34, 35, 36). M 8 screw head (nr 26) serves as steering stop for XLH and FXD models. Check the steering lock, ensure free movement and separation from the gas tank.
- Prepare slider assembly left /right for installation. Longer fork sliders have to be changed with the originals. The fork slider screw (nr 32) has to be installed with 41mmØ and 49mmØ fork sliders. Depending on the model, the spring adjuster (nr 33) in the fork slider screw is pre mounted. With New Style triple trees for FLST you have to dismantle the slider assembly and change the orig. spring limiter with the new one (nr 41, refer pic. nr 4).

Attachment 1 for parts certificate G-Zi.: 06-TAAS-0441/E2/SRA

TÜV AUSTRIA

- Mount the slider assembly into the triple tree. With a classic style triple tree, push the slider fork up that the screw stands above the upper bracket, and then fasten the tightening bolt and the Allen screw (nr 20/21 + 3).

With new style and bob style triple tree you have to connect the fork slider with screw and o-ring (nr 30+31) from the top, then tie up the tightening bolt (nr 13).

- Adjust the roller bearing according to manufacturer's specifications.
- With classic style, you have to insert the spring into the steering head, using the aluminum cap and the Allen screw (nr 25, 7, 19, see pic. 3)

With bob style and new style, you have to insert it into the steering head and the slider assemblies (nr 25, 7/34, 19).

- Mount the risers with screws (nr 13).
- Classic style, remove the cover (nr 22) and route the cables from the instrument panels through it (see pic. 1).

New style, unscrew screw (nr 19) from the upper bracket and remove cover (nr 22) by lifting it up. Then route the cables and reinstall the cover (see pic. 2). Make sure to reconnect all wires.

- With XLH + FXD with 39Ø and 49Ø sliders, you have to dismount the brake disc and install the spacer kit, using Allen bolts (nr 8 + 12).
- Mount the front wheel (using a new axle and spacers, nr 16,19,11, with XLH + FXD).
- Mount the fender (using new screws/bolts and spacers, nr 9,15, for XLH + FXD).
- The brake line can be routed through the drilling next to the risers and may be fixated with the original clamp like on the orig. triple tree. Bleed the brake system.

Caution:

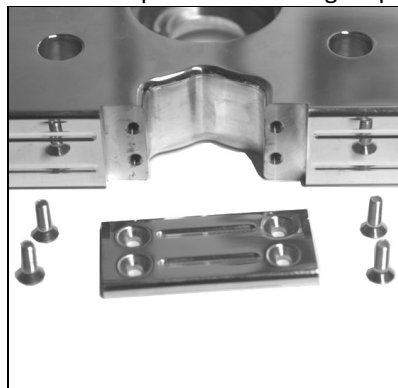
Use only brake fluid recommended by the manufacturer!

With longer fork sliders you have to use a TÜV certificated brake line!

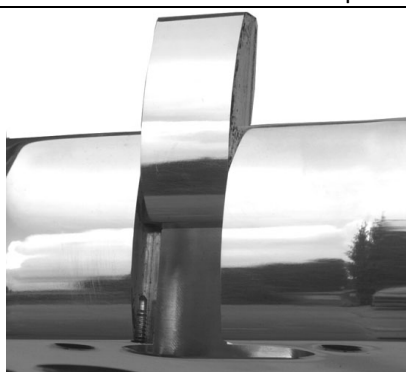
- Test drive your motorcycle and have the changes registered in your papers.

Parts List Müller Triple Tree Kit Type 01

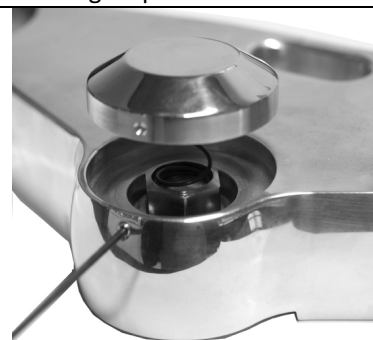
Nr.	Classic Style	Qty.	Nr.	Bob Style	Qty.
1	upper bracket	1	1	upper bracket	1
2	lower Bracket	1	2	lower Bracket	1
3	DIN 912 screw 5/15" UNF 3/4"	4	3	DIN 912 screw 5/15" UNF 3/4"	4
4	stem for V2A triple tree	1	4	stem for street bob	1
5	bearing adjuster (not FXST)	1	5	bearing adjuster (not FXST)	1
6	nut for steering axis Din 936 M22	1	6	head screw for steering axis	1
7	cover for steering head	1	7	cover for steering head	3
8	brake disc spacer, XLH 250mm	1	8	bake disc spacer	1
9	spacer for fender XLH250mm	4	9	alum. spacer Ø 16 / 18mm long	4
10	axial spacer triple tr. 39/250 left	1	10	spacer bushing left	1
11	axial spacer triple tr. 39/250 right	1	11	na	
12	DIN 912 screw 5/16 UNC 1 1/4"	5	12	DIN 912 screw 5/16 UNC 1 1/4"	5
13	DIN 912 screw 1/2 UNC 1 1/2"	2	13	DIN 912 screw 1/2 UNC 1 1/2"	2
14	DIN 912 screw 3/8 UNC 1"	1	14	hex socket 3/8 UNC 1" Din 912	1
15	DIN 912 screw 5/16 UNC 2 1/2"	4	15	DIN 912 screw 5/16 UNC 2 1/2"	4
16	axle XLH 250mm	1	16	axle XLH 250mm '2004 and up	1
17	dust cover for part 48365-48A	1	17	na	
18	roller bearing BK-L44643	1	18	na	
19	Allen screw M4x5 Din 914	1	19	Allen screw M4x5 Din 914	3
20	tightening bolt diameter 39,1	2	20	na	
21	DIN 912 screw M8x30	2	21	na	
22	cover for cable routing	1	22	na	
23	countersunk screw M4x12 DIN 7991	4	23	na	
24	disc DIN 125 M24	1	24	na	
25	spring	1	25	spring	3
26	hex socket M8x12 DIN 912 galv.	2	26	hex socket M8x12 DIN 912 galv.	2
27	lockwasher M8 DIN 7980	2	27	lockwasher M8 DIN 7980	2
28	na		28	steering lock mount	1
29	na		29	steering lock DIN 6912 M8x12screw	2
30	na		30	fork slider screw	2
31	na		31	o-ring	2
32	na		32	fork slider mount bolts	2
33	na		33	spring adjuster Ø49 fork	2
34	steering stop	1	34	steering stop	1
35	aluminum spacer for steering stop	2	35	aluminum spacer for steering stop	2



Pic. 1 Cover Classic Style



Pic. 2 Cover Bob Style/New Style



Pic. 3 Steering head cover



MÜLLER MOTORCYCLE AG

quality parts

by müller motorcycle ag

Attachment 1 for parts certificate G-Zi.: 06-TAAS-0441/E2/SRA

TÜV AUSTRIA

Parts List Müller New Style Triple Tree Kit Type 01

Nr.	New Style	Qty.	Picture 4
1	upper bracket new style	1	
2	lower bracket new style	1	
3	DIN 912 screw 5/15" UNF 3/4"	4	
4	stem new style V2A	1	
5	adjusting nut 48332-48C(not for FXST)	1	
6	steering head screw	1	
7	steering head cover	1	
8	brake disc spacer, XLH 250mm	1	
9	spacer for fender XLH250mm	4	
10	axial spacer triple tr. 39/250 left	1	
11	axial spacer triple tr. 39/250 right	1	
12	DIN 912 screw 5/16 UNC 1 1/4"	5	
13	DIN 912 screw 1/2 UNC 1 1/2" V2A	2	
14	DIN 912 screw 3/8 UNF 1"	1	
15	DIN 912 screw 5/16 UNC 2 1/2"	4	
16	axle	1	
17	dust cover for part 48365-48A	1	
18	roller bearing BK-L44643	1	
19	Allen screw M4x5 Din 914	4	
20	na		
21	na		
22	cover new style triple tree	1	
23	na		
24	na		
25	spring DIN 2076	3	
26	screw DIN 912 M8x12	2	
27	lockwasher M8 DIN 7980	2	
28	na		
29	na		
30	fork slider screw	2	
31	o-ring 16,00 x 3,00	2	
32	fork slider mount bolts	2	
33	spring adjuster Ø39	2	
34	cover new style	2	
35	hex socket M5x35 Din 912	4	
36	disc new style	2	
37	round-wire snap ring	2	
38	alum. tube new style 190mm	2	
39	alum. tube cover lower	2	
40	springs Din 2076	4	
41	spring limiter	2	

damper tube

Stabdämpfer

slider tube

Standrohr

nr 41 spring limiter

lfd. 41 Federbegrenzer

Specify Torques:

M4 - 5Nm, M8 - 25Nm, 5/16 - 25Nm, 3/8 - 35Nm 1/2 - 50Nm, M16 - 50Nm (Nr. 6 conical screw) - 1" - 50Nm (Nr. 6 nut)

Front wheel axle, according to manufacturer!